



ISO 9001:2008
Zert.-Nr. 01 100 89747



Metall- und Plastikverarbeitungs- GmbH & Co. KG Kierspe

Internet: www.mpk-kierspe.de



ISO 14001:2004
Zert.-Nr. 01 104 069609

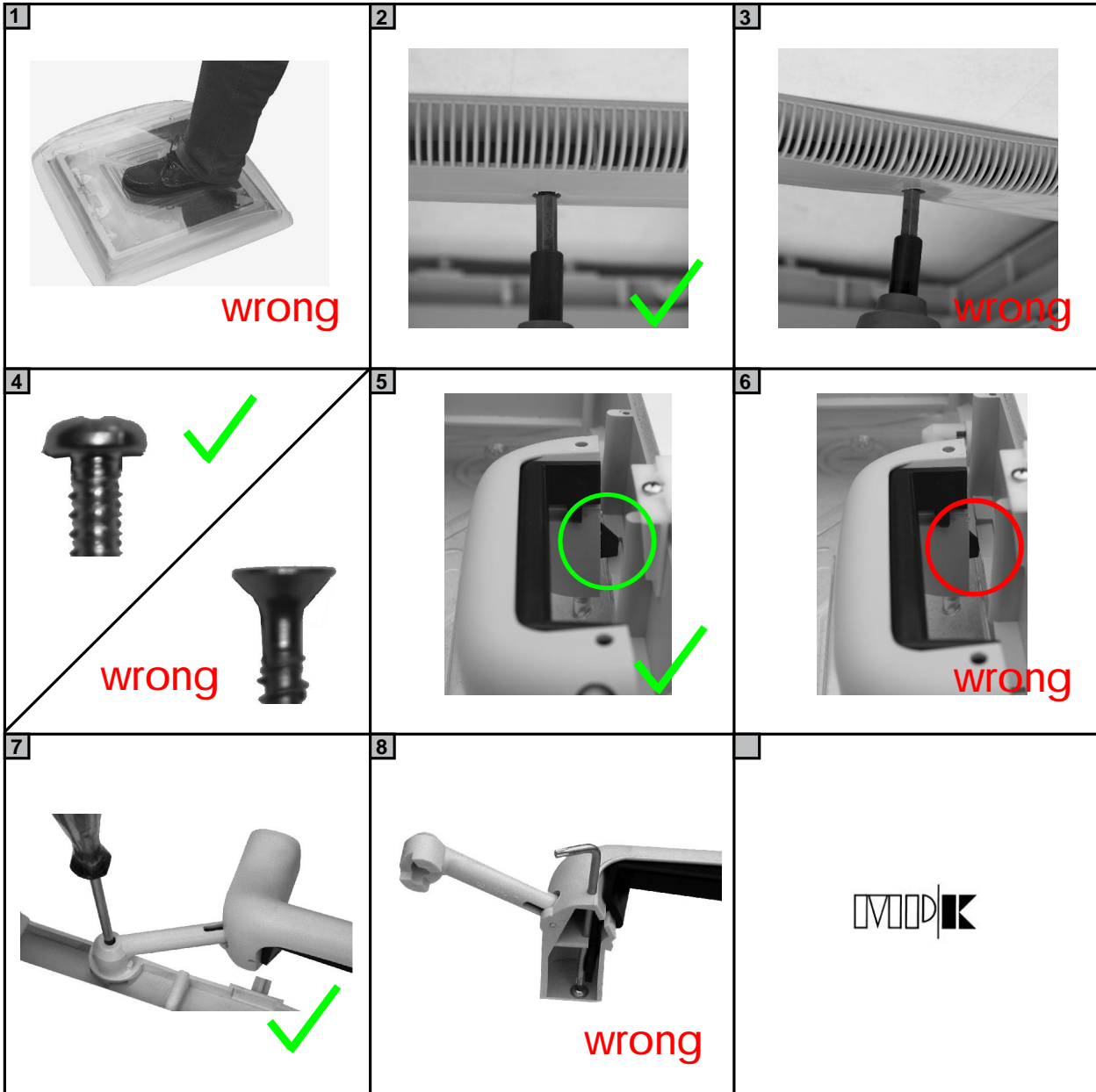
Fitting and Operating Instructions



Rooflight VisionVent M - Mod. 4751K (4701K)
Rooflight Model 46K/ 4600K/ 44K/ 4400K



Illustration



We only recommend installation by authorised dealers.
Please read these instructions carefully before fitting and operating the rooflights.

Important: We cannot be held responsible for incorrect fitting, handling or operation.

Any product faults relating to the production and materials used should be notified to us via an authorised dealer immediately.

Fitting Instructions

Warning!



Never stand on the dome of the rooflight! (see picture 1)

Fitting position



Choose a fitting position that will not interfere with other roof mounted components (e.g. roof-racks/antenna's etc.) and avoid internally installed electrical cables and furniture, which could impede the correct operation of the rooflight.

The rooflight should only be fitted to a flat roof surface, both internally and externally.

Aperture size

400x400 mm (see technical data page 6-7)

Roof thickness

Ensure the correct rooflight is selected for the roof thickness (for available size options see page 6).

Fitting direction

Rooflights must only be fitted with the operating handles facing the front and rear of the vehicle, not across the vehicle.

Fixing screws

Secure only with pan, or round headed screws (not supplied), 3,5 mm/ head according to DIN ISO 7049 (DIN7981).

Screw size: When fully tightened the screw should enter the outer frame about 10 mm.



Do not use countersunk screws as they will damage the rooflight frame. (see picture 4)

The length of the screw should be determined by the roof thickness, plus approximately 10 mm for the screw to enter the upper frame.

Sealing



Use only long term flexible sealant, suitable for external use, (not supplied), and also suitable for the material of the upper frame. Consult your sealant supplier.

Fitting

Before fitting the rooflight remove the profiles covering the flynet and blind rollers. These are temporarily/partially fitted into place when new. PLEASE NOTE: When fully fitted these profiles cannot be removed without being damaged. It is therefore important to make sure the rooflight is fitted and operates correctly, before fully installing the profiles.

Correctly align the upper and lower frames and secure evenly with the screws. Do not over-tighten as this may damage the frame, or affect the correct operation of the rooflight. If the inner frame starts to distort, the correct torque has been reached. (see picture 2 - 3)

Screws not supplied.

Operation Instruction

Instruction for use

The rooflight can be opened fully, or in four different directions, so that the dome can be angled against driving weather conditions. The handle profiles of both roller blinds (flynet and roller blind) click into space at the edge of the frame and can be opened by pulling the handle (arrow on the handle profile).

With both roller handle profiles clipped together they can be moved to any position. To separate, fully open the flynet and squeeze together the catches on the central lock and allow flynet to recoil.

Free-air-flow



When closed there is a free airflow through the rooflight, which must be kept free at all times (see technical data page 6-7).

Before driving



IMPORTANT: All rooflights must be locked down before traveling (see picture 5-6) and both roller blinds locked in the fully open position against the frame.

Care Instructions

Cleaning



The rooflight should only be washed by hand, using a sponge with plenty of clean water to avoid scratching. Caustic detergents and solvents may attack the plastic and make it brittle or disintegrate.

For easier cleaning of the dome it can be removed from the frame by releasing the four screws holding the handle arms. (Models from 2010 Torx TK9 screws). (see picture 7)

Make sure that only the original screws are used when replacing the dome and that they enter the thread in the plastic correctly. Do not over-tighten.



Never remove the screws holding the dome and the handles together (see picture 8). These are secured by a torque screwdriver and should only be handled by an approved dealers.

With the profiles covering the rollers removed the roller can be easily removed. To refit the rollers the spring motor will need to be tensioned; Flynet 3 revolutions, Blind 4. PLEASE NOTE: the profiles covering the rollers cannot be removed without being damaged, see page 7 to order replacements.

Technical Information

Product description

- Clear or opaque domes with free airflow
- Spring assisted mechanism, with locks
 - concealed fixing screws
- Removable flynet, optional roller blind
- Free airflow is calculated with roller closed
 - ECE R43 Whole Vehicle Typ Approved
Modell 4400K approved according to TA29

(Please ask for further details.)

-

Technical Data:

Aperture:	400 x 400 mm
Size dome:	560 x 560 mm
Height over roof:	
Mod. 44K/ 4400K	117 mm
Mod. 46K/ 4600K	92 mm
Mod. 4751K (4701K)	96 mm
Free-air-flow:	Please refer to model options!
Outer frame material:	Polypropylene
Dome material model 4751K	PMMA/ SAN
Other models:	Polypropylen

Technical Information

Model Options:

Model 44K (opaque dome)

white	grey	beige	Roller	Net	roof thickness	air-flow	weight
440VKNW	440VKNG	-----	---	X	24 - 56 mm	95 cm ²	2700 g
440VKRW	440VKRG	-----	X	X	24 - 56 mm	95 cm ²	2850 g
441VKNW	441VKNG	-----	---	X	42 - 70 mm	95 cm ²	2800 g
441VKRW	441VKRG	-----	X	X	42 - 70 mm	95 cm ²	2950 g

Model 4400K (clear dome)

white	grey	beige	Roller	Net	roof thickness	air-flow	weight
4400VKNW	4400VKNG	-----	---	X	24 - 56 mm	95 cm ²	2700 g
4400VKRW	4400VKRG	-----	X	X	24 - 56 mm	95 cm ²	2850 g
4410VKNW	4410VKNG	-----	---	X	42 - 70 mm	95 cm ²	2800 g
4410VKRW	4410VKRG	-----	X	X	42 - 70 mm	95 cm ²	2950 g

Model 46K (opaque dome)

white	grey	beige	Roller	Net	roof thickness	air-flow	weight
460VKNW	460VKNG	-----	---	X	24 - 56 mm	150 cm ²	2745 g
460VKRW	460VKRG	-----	X	X	24 - 56 mm	150 cm ²	2895 g
461VKNW	461VKNG	-----	---	X	42 - 70 mm	150 cm ²	2845 g
461VKRW	461VKRG	-----	X	X	42 - 70 mm	150 cm ²	2995 g
460VKNW-3	460VKNG-3	-----	---	X	24 - 56 mm	30 cm ²	2745 g
460VKRW-3	460VKRG-3	-----	X	X	24 - 56 mm	30 cm ²	2895 g
461VKNW-3	461VKNG-3	-----	---	X	42 - 70 mm	30 cm ²	2845 g
461VKRW-3	461VKRG-3	-----	X	X	42 - 70 mm	30 cm ²	2995 g

Model 4600K (clear dome)

white	grey	beige	Roller	Net	roof thickness	air-flow	weight
4600VKNW	4600VKNG	-----	---	X	24 - 56 mm	150 cm ²	2745 g
4600VKRW	4600VKRG	-----	X	X	24 - 56 mm	150 cm ²	2895 g
4610VKNW	4610VKNG	-----	---	X	42 - 70 mm	150 cm ²	2845 g
4610VKRW	4610VKRG	-----	X	X	42 - 70 mm	150 cm ²	2995 g
4600VNW-3	4600VKNG-3	-----	---	X	24 - 56 mm	30 cm ²	2745 g
4600VNRW-3	4600VKRG-3	-----	X	X	24 - 56 mm	30 cm ²	2895 g
4610VNW-3	4610VKNG-3	-----	---	X	42 - 70 mm	30 cm ²	2845 g
4610VNWRW-3	4610VKRG-3	-----	X	X	42 - 70 mm	30 cm ²	2995 g

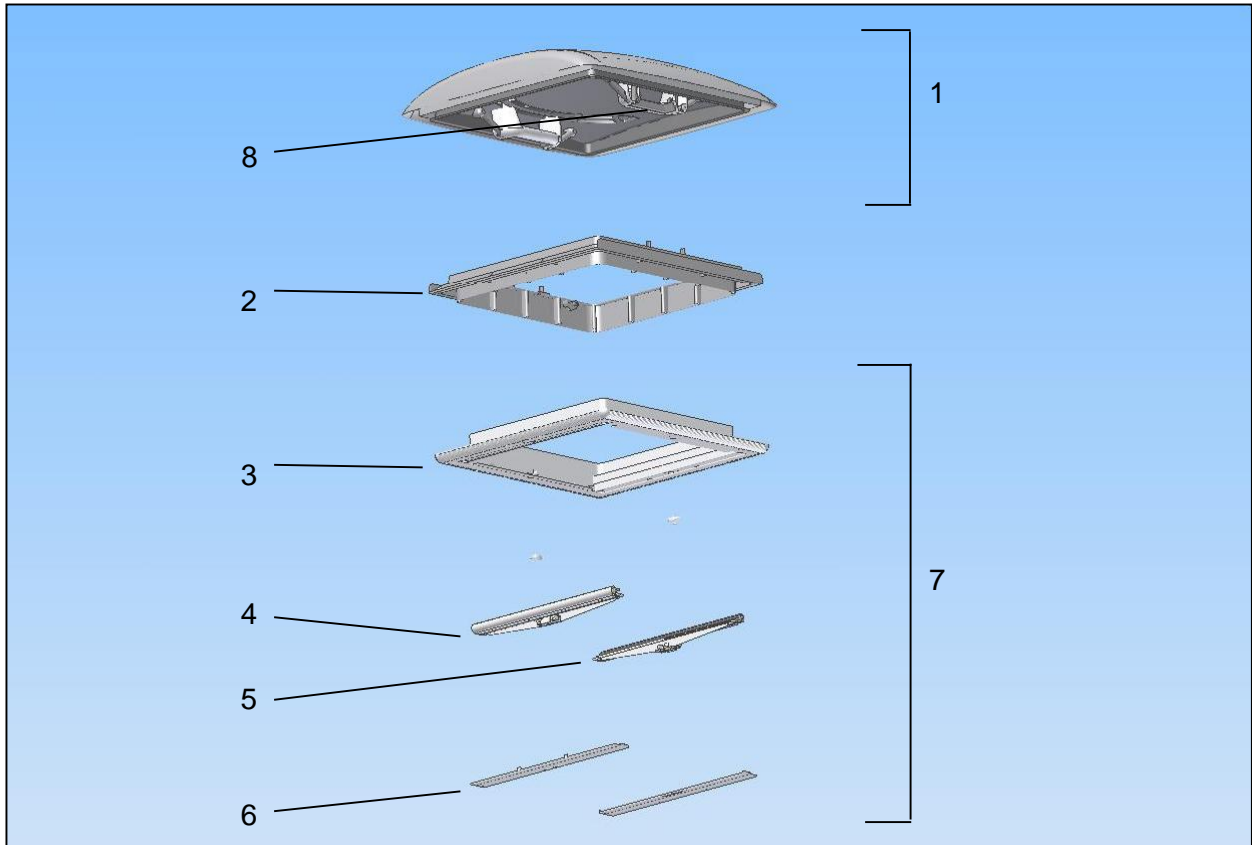
Model 4701K (clear dome)

white	grey	beige	Roller	Net	roof thickness	air-flow	weight
4701VKNW	4701VKNG	-----	---	X	24 - 56 mm	150 cm ²	3255 g
4701VKRW	4701VKRG	-----	X	X	24 - 56 mm	150 cm ²	3405 g
4701VKNW	4701VKNG	-----	---	X	42 - 70 mm	150 cm ²	3355 g
4701VKRW	4701VKRG	-----	X	X	42 - 70 mm	150 cm ²	3505 g

New colour 1.7.2008:

**Old white RAL 9010 - only spare parts available
Please use colour code „AW“ in art-no. (instead of „W“)**

Spare parts



No.	Spare parts	Colour frame:		
		beige	white	grey
1a	Replacement dome <i>model 46K / 4600K</i> opaque - 150 cm ² air-flow opaque - 30 cm ² air-flow clear - 150 cm ² air-flow clear - 30 cm ² air-flow	460.52VB 460.52VB-3 4600.52VB 4600.52VB-3	460.52VW 460.52VW-3 4600.52VW 4600.52VW-3	460.52VG 460.52VG-3 4600.52VG 4600.52VG-3
1b	Replacement dome <i>model 44K / 4400K</i> opaque - 95 cm ² air-flow clear - 95 cm ² air-flow	440.52VB 4400.52VB	440.52VW 4400.52VW	440.52VG 4400.52VG
1c	Replacement dome <i>model 4751K (4701K)</i> clear - 150 cm ² air-flow	4751.52VB	4751.52VW	4751.52VG
8	Locks; 1 set supplied in polybag with hanger.	420.99S	420.99S	420.99S

New colour 1.7.2008:

**Old white RAL 9010 - only spare parts available
Please use colour code „AW“ in art-no. (instead of „W“)**

Spare parts

No.	Spare parts	Colour frame:		
		beige	white	grey
	<u>Replacement frame, roller, net for rooflights</u>			
2	Outer frame for mod. 44K/ 4400K/ 46K/ 4600K/ 4751K (4701K) for roof thickness 24 - 56 mm for roof thickness 42 - 70 mm	420.21B 421.21B	420.21W 421.21W	420.21G 421.21G
3	Inner frame without roller/cover (pos. 8a)	420.22KB	420.22KW	420.22KG
4a	Roller net complete (tighten 3 revolutions)	420.8KB	420.8KW	420.8KG
4b	Roller net handle profile 2-parts	420.21KB	420.21KW	420.21KG
5a	Roller blind complete (tighten 4 revolutions)	420.7KB	420.7KW	420.7KG
5b	Roller blind handle profile 2-parts	420.20KB	420.20KW	420.20KG
6a	Cover for roller blind aperture	420.6KB	420.6KW	420.6KG
6b	Cover for empty aperture (if only roller net available)	420.61KB	420.61KW	420.61KG
7	Inner frame complete with roller/cover	420.22KRB	420.22KRW	420.22KRG
---	Screw cover (26 pcs./bag)	420.9KBP	420.9KWP	420.9KGP
9	Torx screws for handles	8000.4	8000.4	8000.4

New colour 1.7.2008:

**Old white RAL 9010 - only spare parts available
Please use colour code „AW“ in art-no. (instead of „W“)**