



ISO 9001:2008
Zert.-Nr. 01 100 89747



Maß und Präzision in Kunststoff



ISO 14001:2004
Zert.-Nr. 01 104 069609

Metall- und Plastikverarbeitungs- GmbH & Co. KG Kierspe

Internet: www.mpk-kierspe.de

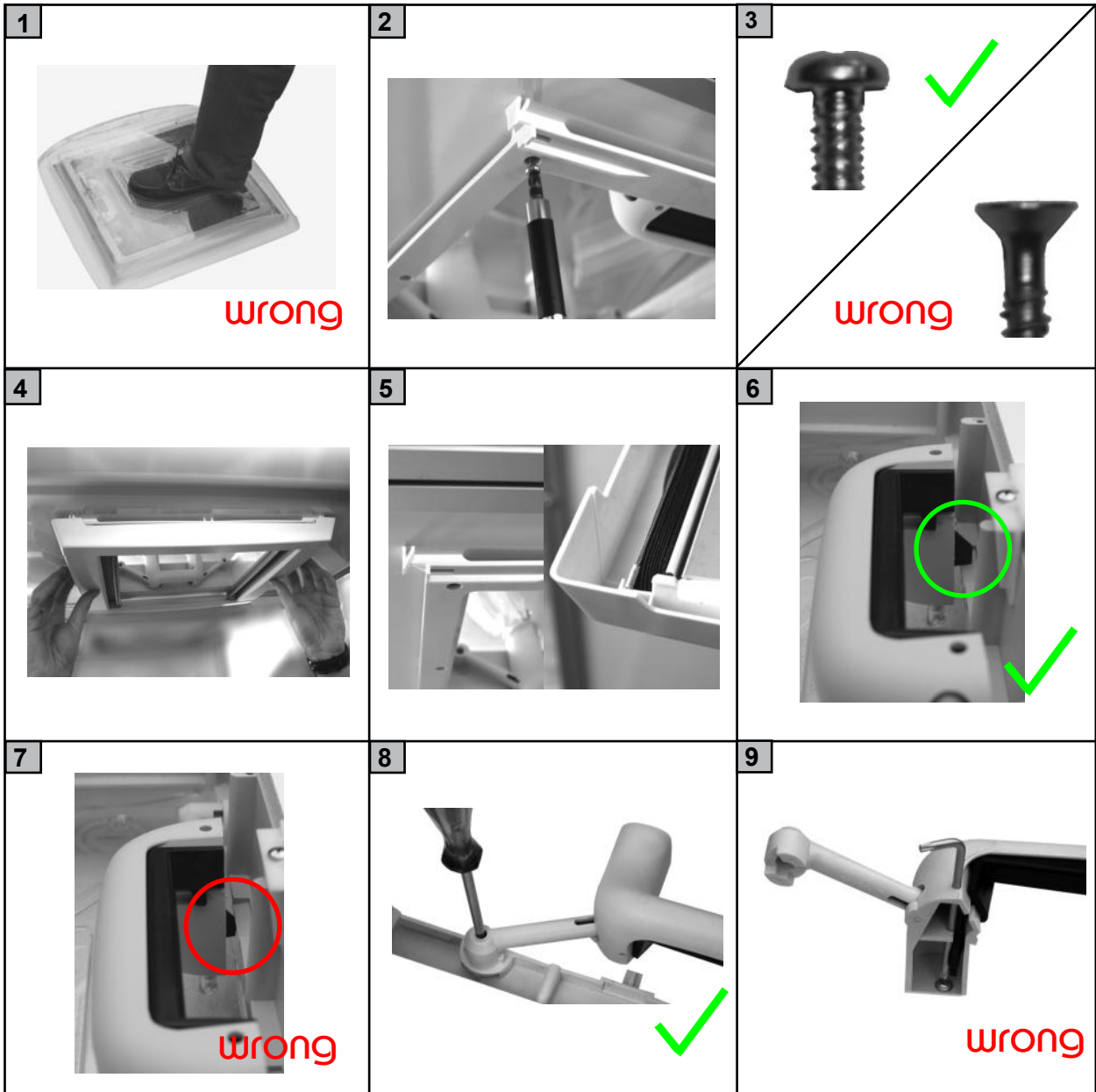
Fitting and Operating Instructions



Rooflight VisionVent S_{pro} - Model 27P



Illustration



We only recommend installation by authorised dealers.

Please read these instructions carefully before fitting and operating the rooflights.

Important: We cannot be held responsible for incorrect fitting, handling or operation.

Any product faults relating to the production and materials used should be notified to us via an authorised dealer immediately.

Fitting Instructions

Warning!



Never stand on the dome of the rooflight!
(See picture 1)

Fitting position



Choose a fitting position that will not interfere with other roof mounted components (e.g. roof-racks/antenna's etc.) and avoid internally installed electrical cables and furniture, which could impede the correct operation of the rooflight.

The rooflight should only be fitted to a flat roof surface, both internally and externally.

Aperture size

280x280 mm (see technical data page 5)

Roof Thickness

Ensure the correct rooflight is selected for the roof thickness. (For available size options see page 6.)

Fitting direction

Rooflights must only be fitted with the operating handles facing the front and rear of the vehicle, not across the vehicle.

Fixing screws

Secure only with pan, or round headed screws (not supplied), 3,5 mm/ head according to DIN ISO 7049 (DIN7981).

Screw size: When fully tightened the screw should enter the outer frame about 10 mm.



Do not use countersunk screws as they will damage the rooflight frame. (See picture 3)

Sealing



Use only long term flexible sealant, suitable for external use, (not supplied), and also suitable for the material of the upper frame. Consult your sealant supplier.

Fitting

Separate the inner and outer frames and fit the outer frame to the outside of the roof aperture onto a bed of sealant which must fill the sealant well in the outer frame. Correctly align the outer and inner mounting frame and secure evenly using 8 screws (See Picture 2).

Screws not supplied.

Do not over-tighten as this may damage the frame, or affect the correct operation of the rooflight. If the mounting frame starts to distort, the correct torque has been reached.

Correctly position the plissé frame to the inner mounting frame and clip it into place. Special centring devices will help to find the right position. (See picture 4-5)



The inner mounting frame has special out cuts for the telescopic arms of the handles. Please ensure the correct orientation of the frame with these out cuts below the telescopic arms.

Operation Instruction

Instruction for use

The rooflight can be opened fully or in four different directions, so that the dome can be angled against driving weather conditions. To open squeeze the locks (optional) into the handles and push open.

Both flynet and blind are from pleated material and can be opened/closed by using the two profiles either together or separately.

Free-air-flow



When closed there is a free airflow through the rooflight, which must be kept free at all times. (See technical data page 6.)

Before driving



IMPORTANT: All rooflights must be closed and locked down before travelling. (See picture 6-7)
Make sure the flynet and the blind are in open position to avoid damage and noise by airflow.

Care Instructions

Cleaning



The rooflight should only be washed by hand, using a sponge with plenty of clean water to avoid scratching. Caustic detergents and solvents may attack the plastic and make it brittle or disintegrate.

For easier cleaning of the dome it can be removed from the frame by releasing the four screws holding the handle arms (Models from May 2010, Torx TK10 screws. Earlier models had cross recess screws). (See picture 8)



Make sure that only the original screws are used when replacing the dome and that they enter the thread in the plastic correctly. Do not overtighten.



Never remove the screws holding the dome and the handles together. (See picture 9) These are secured by a torque screwdriver and should only be handled by an approved dealer.

Picture 10 will follow

The plissé frame can be removed for cleaning. Release the 4 fixing clips with a screw driver to remove the frame.

(See picture 10)

Please release carefully to not damage the clips. After cleaning please mount the plissé frame as described on page 3

(See pictures 4-5)

Technical Information

Product description

- Tinted domes with free airflow
- Spring assisted mechanism, with locks
 - Concealed fixing screws
- Inner frame with flynet and blind from pleated material
 - ECE R43 Whole Vehicle Type Approved
(Please ask for further details.)

Technical Data:

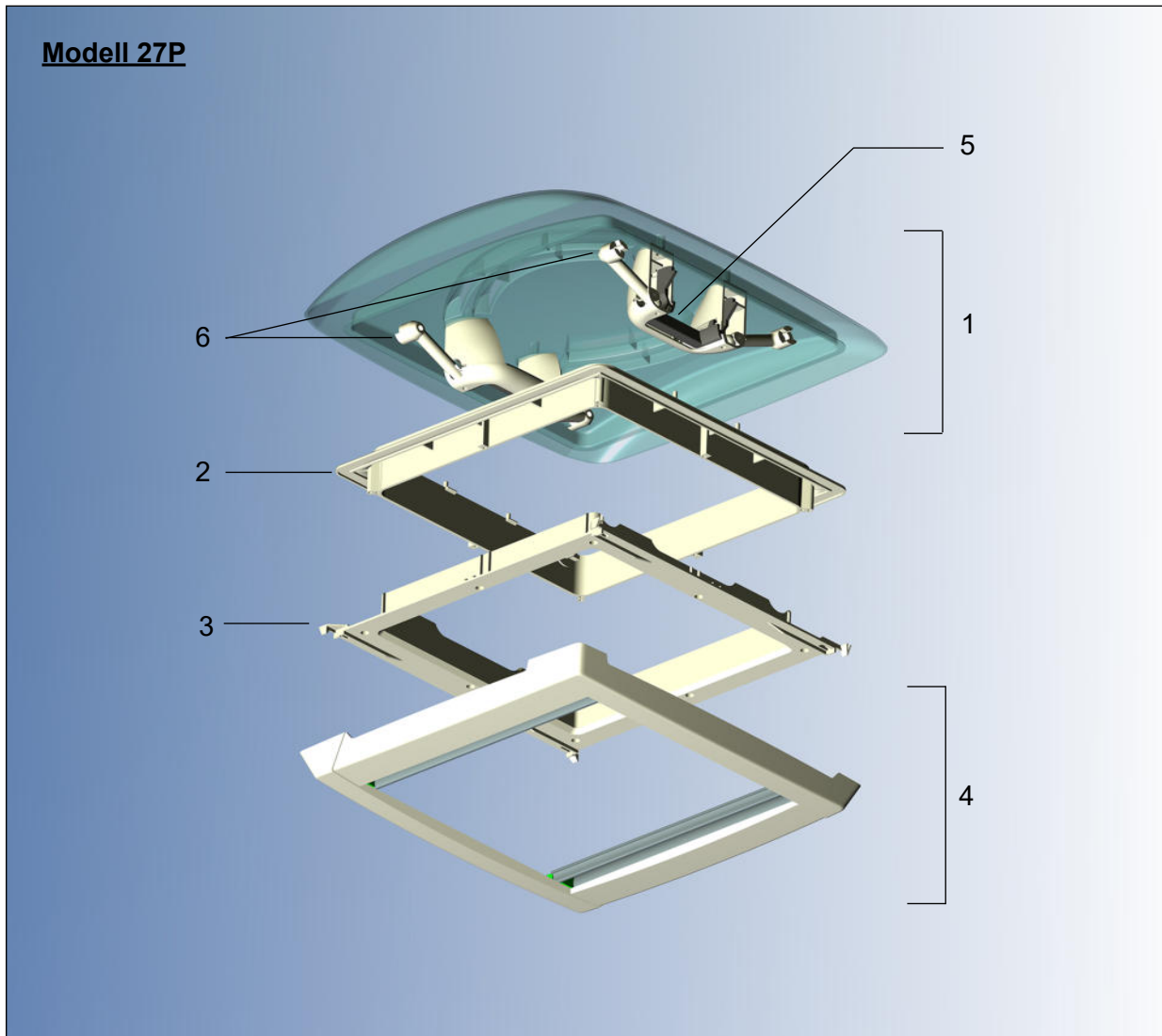
Aperture:	280 x 280 mm
Corner radius:	R = 18 mm
Size dome:	380 x 395 mm
Height over roof:	80 mm
Free-air-flow:	75 cm ²
Outer frame material:	Polypropylene
Inner frame material:	ABS
Dome material	PC + Polypropylene

Model Options

Model 2753 (smoked dome)

<u>white</u>	<u>grey</u>	<u>beige</u>	<u>blind</u>	<u>net</u>	<u>roof thickness</u>	<u>weight</u>
2753VPW	-----	-----	X	X	24 - 46 mm	1800 g
2763VPW	-----	-----	X	X	42 - 72 mm	1880 g

Ersatzteilübersicht



Nr.	Ersatzteilbezeichnung	Rahmenfarbe weiß
1	Replacement dome, tinted, complete with handles for model 27/ 27P	2753.52VW
2a	Outer frame for model 27/ 27P/ 29 for roof thickness 24 - 46 mm	280.22W
2b	Outer frame for model 27/ 27P/ 29 for roof thickness 46 - 72 mm	291.21W
3	Inner mounting frame for model 27P	2750W
4	Plissé frame for model 27P	2750.22PW
5	Locking device for model 27/ 27P/ 29	270.99S
6	Torx screws for handles	8000.4